

NEW TEAM AT THE HELM

Club Secretary, *Gof Bowles* reports:

The AGM on 22 October was very well attended with almost 50 members present. The meeting elected/re-elected the following to the Board:-

KILLARA BOWLING CLUB LIMITED

CHAIRMAN	<i>Warwick Druce</i>
VICE CHAIRMEN	<i>Lea McNeill, John Muirhead</i>
HON. TREASURER	<i>Miles Hedge</i>
HON. SECRETARY	<i>Gof Bowles</i>
DIRECTORS Elected	<i>Barbara Cotton, Nancy Swanson</i>
DIRECTORS Invited	<i>John Krieger, Robin Hey</i>

COMMITTEES

	KWBC	KBC
PRESIDENT	<i>Lea McNeill</i>	<i>John Muirhead</i>
VICE PRESIDENTS	<i>Joan Young, Judith Wall</i>	<i>John Krieger, Bob Hill</i>
SECRETARY	<i>Robin Hey</i>	<i>Robin Hearder</i>
TREASURER	<i>Joan Hodgson</i>	
COMMITTEE	<i>Elizabeth Bold, Maureen Morris, Ailsa Daniel</i>	<i>Graham Shirley, Ian Armstrong</i>
SELECTION	<i>Pat Hamilton</i>	<i>Bob Sinclair (C), Michael Tsolakis, Arthur Krust</i>
SOCIAL	<i>Margaret Shirley</i>	<i>Colin McElhone</i>
BOWLS ORGANISER	<i>Ray O'Donnell</i>	<i>Ed O'Donnell</i>
PUBLICITY	<i>Beryl Stephens</i>	<i>Bob Hill</i>



Merry Christmas



From the chair . . . Farewell from retiring Chairman, Peter Baume . . .



There has been a changing of the guard at KBC. At the Club Limited AGM we elected **Warwick Druce** as Chairman and elected a new Board of Directors.

To all of them go our best wishes.

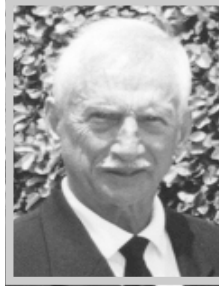
Warwick will be a very good Chairman. He is very experienced as our House Manager and has done a mighty job there. He lives close to the Club and is committed to its welfare. He is a very good contributor to debate in Board Meetings and will do well in getting the best from the Board.

The men's Club too will do well with **John Muirhead** as its President. He is such a nice man and we all love **Elsbeth** too. There is so much that we can still do around the Club and John is the man to do it. He was instrumental in the approval and then the construction of our car park – something that surprised neighbors with its success, which added to our own enjoyment and which, in one act, removed the most frequent criticism by others of our Club. Actually John might recall the day we were “bombed” on the green by the boys next door and he came with me while we waited on the neighbors to complain. John was wonderful to have with me and was appropriately stern with the folk - as he should have been! Warwick will enjoy too having **Lea McNeall** as President of the Women's Club – she is so sensible and balanced – and she is on about solving problems as well.

We will have to pursue the question of shades – both the replacement of some of our older shades and maybe some shades on Number Three Green. We will have to solve the problem of muddy water from the lane making some paths slippery and we have to address the whole question of “drought-proofing” our Club – if it can be done for a reasonable amount of money. Then we have the continuing and worrying problem of our membership numbers and of our ageing membership.

Good luck to all in responsible positions now. May you all have a very good year and one productive for the Club.

Peter Baume



. . . and an Inaugural Report from incoming Chairman , Warwick Druce.

As I put pen to paper to create my first report as incoming Chairman, I must, on behalf of all members, thank **Peter Baume** for having guided our Club so

successfully over the past three years. I only hope that I will be able to do as well.

I would like to welcome **John Muirhead** as the incoming President of the Men's Club and thank **Ian Cameron-Smith** for all the good work he has done during his tenure. John Muirhead is also welcomed as a new Director to the Board along with **Miles Hedge** as Treasurer. We still have two vacancies which are expected to be filled shortly. Both the Women's and Men's clubs have appointed new Bowls Secretaries: **Robin Hey** for the women; and **Robin Hearder** for the men. (it could get confusing for other than members!) Our thanks to those standing down - **John Orton** and **Joan Bain**. Particular mention must be made of Joan's wonderful dedication to KWBC, having been Bowls Secretary since Eve was a girl!

Our trading figures for September quarter show an operating loss of \$1228 against a similar profit for last year. This was mainly due to a decline in green fees, bar and canteen trading, all of which had recent price increases. These items are all directly related to club patronage which is still in decline. We must all work harder at introducing new members if we are to arrest this trend.

We have recently successfully trialed “**Barefoot**” and “**Corporate**” bowls. A group of year 8 students from **Killara High School** were well taken care of by **Ed. O'Donnell, Ray O'Donnell and Jack Williams** during a recent ‘Look at bowls sports period’. Ed's excellent organization and enthusiasm was very well received as attested by the letter reprinted on page 3.

Also, we have a reservation for about 40 staff of **North Shore Hospital's** Aged Care Department for a Christmas function with barefoot bowling on 17th December. I ask members to be alert to promoting such events as they generate useful income for the Club. More details can be obtained from me or **Sue Cleary**.

The Board has now determined the figure of \$100 as the annual subscription for both men and women under the new classification of **Intermediate Bowling Member** as introduced at the last AGM. We have since learned that both Royal and Women's Bowling Associations require that bowling members must be entitled to vote; without voting rights these Intermediate Members would not be able to legally play. We see no reason why Intermediate Members should not be accorded the right to vote so arrangements are being made to recommend an amendment to our constitution.

Continued at bottom of page 3



KWBC Presidents' Platform

A review of KWBC'S calendar year is a very happy one. Not necessarily great in terms of external competitions, but there has been a very congenial and enjoyable atmosphere amongst club members.

It has also been pleasing to see some of our players entering teams for self-selected district and state events.

Good spirits have continued through our social functions, and we have welcomed extra participation from the club's associate and social members. Hopefully they will continue to join in our celebrations and meet us for lunch on Tuesdays, when *Sue* is always able to produce an extra sandwich for lunch.

The Ku-ring-gai Shield was our final interclub competition for the year, and Killara, with 4 wins and 6 losses, came equal 5th.

The Men's Club has welcomed the opportunity to include women in their bowling days. It is hoped that this invitation will be accepted — during KWBC's recess might be a good time to start.

Our two final functions for the year are KWBC'S Christmas Lunch and Presentations, on Tuesday 6th December, and the KBC Ltd. Christmas Cocktail Party.

Look forward to seeing you there — and

Seasons's Greetings.

Lea McNeall.



KWBC President
Lea McNeall



Retiring KBC President
Ian Cameron-Smith

I was honoured to have been your President these past 3 years and most fortunate to have had the support of good committees. I would like to thank members for my parting gift of the fly fishing reel. I assure you it is "state of the art" and has already been successful in netting a two and a half pounder last week in the Fish River at Oberon.

I give my best wishes to John Muirhead and his new team; to the Board and our partners in KWBC. The Clubs' are in good hands. **Ian Cameron-Smith**

Subject: RE: killara high excursion

Date: Thu, 24 Nov 2005

From: "Marilyn BRUEN"

To: "Peter Baume"

Dear Peter,

I wonder if you would pass along our thanks to the club for the wonderful excursion Ed O'Donnell organised for my Year 8 class. The class was coached by Ed, his wife and Jack Williams, all of whom really had the kids involved in their efforts and gave them a real feel for the game. Intense competition took place between some of the students while others were amused by the antics and strange pathways along the green taken by their bowls as they appeared to have minds of their own.

I will try later to send some photos taken on the day which may be amusing for you and some of your members to view. Unfortunately, that's out of my technical reach at the moment.

Once again, please pass on our thanks to all of those involved and to the ladies who were playing on the next green. They were very tolerant of their peaceful, quiet competition being disrupted by the joyful excited ness of a group of young teenagers.

Marilyn Bruen
PDHPE Teacher

MANSER TIERNEY & JOHNSTON

CHARTERED ACCOUNTANTS

ABN 33 361 646 430

FIRST FLOOR

20 RAILWAY AVENUE

(P.O. BOX 63)

WAHROONGA 2078

Tel:02 9487 2333 : Fax:02 9487 2109

mansertj@iprimus.com.au

Auditors to Killara Bowling Club Ltd.

Continued from page 2

Another item discussed at the AGM was equal access to greens by both men and women subject to certain provisions. This will be helpful for those women wishing to play when KWBC's schedule is in recess. Women may play individually (mixed) or as a team. We have decided against installing Sunshades on No. 3 green. It was felt the limited use of this green did not justify the expenditure of over \$2000. We must make do with the existing beach umbrellas.

The Graham Firth Green is presently under renovation incurring considerable additional expense arising from the replacement of plinths. It will be laser leveled next week and we should have an excellent surface to play on in the near future. On commissioning of the GF, Hilary Moore Green will be taken out for renovation in time for Pennants.

On behalf of your Board, I wish all members and families a very Happy Christmas and New Year.

Warwick Druce



KBC Presidents' Platform : *John Muirhead*



**John Muirhead
President KBC**

I am bound to say that I have had some reservations in accepting the nomination to the Presidency of your Club. In my period of membership (1997) I have been privileged to observe men of the calibre of *Bob Sinclair, Cyril Vahtrick, Warwick Druce* and *Ian Cameron-Smith* carry out this duty with skill and dedication. They have set a very high standard.

I am also very conscious that our great Club is facing a crisis of declining membership and all that implies. I know this job is going to be tough; but I also know that we love our bowls and treasure what we have in KBC. Together, **women and men**, we must find a way through this crisis. So to business:-

PENNANTS GRADING

The Club has received preliminary written advice from Zone 9 Match Committee of the RNSWBA that the Club's sides would be placed in Grades 6 and 7 for the 2006 season. This was in the face of the fact that the Club initially tied for first place in Grade 5 of the 2005 Pennants Competition. The count-back to determine our final position reduced us to Runners-up. This was certainly no justification for a demotion.

On the facts of our results in Grade 5, the decision was protested in writing by Past President Ian Cameron-Smith and orally by our representative on the Zone Committee, *John Krieger*. John was advised by the Chairman of the Zone Match Committee that the decision was thought justified because it was known by him that our best player would not be in our side for the 2006 season.

We understand that our protest has been successful and that our top team will be restored to Grade 5 for 2006. The Selectors propose to arrange Intra-Club Pennants trial games for 3rd and 10th December and 21st and 28th January and then Inter-Club games on 4th and 18th February as an aid to selection and team bonding in preparation for the start of the 2006 Pennants Season in March.

The Committee believes that the Club faces a challenge to justify its decision to protest the attempt to down grade it and that it is taking the appropriate actions to face it.

COACHING

The Selectors have conferred with Club coaches *Edwin Burton* and *Ed O'Donnell*, to develop a programme of coaching to build on the 2004 coaching they undertook. The programme is well under way with coaching sessions taking place on Wednesday and Saturday mornings at 10.30.

It is an imaginative programme to develop physical and tactical skills which has involved considerable preparation and hard work by the coaches. There is no doubt that those who are participating are rewarded by improved skills. This must add to the enjoyment they derive from the game. It will also raise the standard of our Pennants teams. Our sincere thanks to Edwin and Ed.

MEMBERSHIP

There is a very urgent need to address this issue, it is critical. It affects our financial viability as a club and our ability to field teams in inter-club competitions. It was discussed at the last meeting of the Board and it is the intention of the Board that there will be a Membership Drive in the conventional form in the autumn. It was also agreed that there should also be a personal drive, a proposal that involves members inviting friends and acquaintances or former colleagues to come to the club to try the game on occasions of mutual convenience, probably Sundays. This can start at any time and should be continuous.

As all of us already know, the fun and excitement of playing bowls is perhaps unexpected and has to be experienced !

Bowling is among the most affordable of sports and playing bowls in good friendly company is so much more satisfying than in the highly competitive environment that exists in some clubs. Second hand bowls for use in trials will be provided free by the Club and then may be purchased at very low cost.

We are fortunate to be members of a special club with excellent amenities and a most congenial membership. We shouldn't keep it to ourselves. Some of our members travel from afar to play their bowls at Killara, it is worth the journey. And living in proximity to another club does not carry any kind of obligation to join and play bowls there.

The Club is preparing a brochure giving essential information for prospective members and a form of invitation which may be appropriate in some circumstances. These will be available soon.

Now, I have a brief word for our colleagues of KWBC. **You are the social backbone of our club;** It is impossible to envision that Killara can prosper without the full support of our Ladies. We have jointly agreed that the men and women of Killara are now able to bowl on virtually any day and in any team combination. This has been vigorously promoted by *Lea McNeill* and endorsed by the Executive as the way to go forward.

I believe, and my wife Elspeth agrees, this could be decisive for our future. **There is nothing that can resist determined women! If we men are equally determined, our club will prosper for another 90 years!**
Compliments of the Season !! *John Muirhead*



Beside you on the Green... .KBC Profiles

At Killara we share a love of our great game and our tradition for equality, friendliness and conviviality. There is no place for elitism from a social point-of-view.

Whether you earn a living from the sweat of your brow or oratory in high places, the 'level of the mat' is the same for all!

Even so, there are many interesting individual stories within our membership which I feel we should discover and share. Space limitations will make these but "thumbnails" however, it is hoped you find them interesting.

rhb

WARWICK DRUCE

Warwick Druce is a man of many parts and holds the key to the efficient running of our Club. It is easy to take for granted that the Clubhouse will be clean and ready for every event, that the bar will be stocked and staffed and catering arrangement in place. Warwick, with the indispensable help of Sue Cleary, is the one to make it all happen.

porting Company, he was attracted by the glamour of the industry and opportunities for travel and commenced a career which progressed to the position of NSW Manager and a Director of the company. Following a merger with English wool topmakers Sir James Hill and Sons, he was sent to Perth to manage the expansion of the business in the west and then to Adelaide to set up a S.A. branch. In 1978 he was transferred back to Sydney.

Following a takeover of the firm in 1979, he decided to resign and seek opportunities to establish a business of his own. He bought a newsagency in Chatswood and later started a second one. Unable to tolerate the long and demanding work-hours because of health problems, he sold both newsagencies in 1995, had double knee replacements and took up bowls!

He was a member and Vice-President of the Lions Club, and was Treasurer of Easy Care Gardening, a Council-based initiative to help aged and handicapped people to remain in their own homes.



At the centre of this picture as he is always at the centre of important club activities, **Warwick** is pictured here receiving a gold watch and Tribute of Appreciation of his Presidency (2000:2001:2002) from Patron **Norman Winckle** and in-coming President **Ian Cameron-Smith**.

For the past 8 years he has held the onerous and honorary position of House Manager of the Killara Bowling Club.

Warwick joined the Club in 1996 at the invitation of school friend John Baker, and immediately became an active and willing member. He has served on the Board of the Club Limited for 8 years and has now accepted the added responsibility of being its Chairman. He was the Bowling Club President for 3 years, 2000-2002, and was elected Vice President of the District Committee in 2003.

Born in 1931, he was educated at Trinity and Knox and did 2 years of Economics at Sydney University. Given the opportunity of joining a Woolbuying /Ex-

He received an award for voluntary service in the Kuring-gai area. He is Bowls Convenor of the Probus Club.

The name of Warwick Druce appears frequently on the Club's Honour Boards. He has won Pairs, Triples and Fours Championships more than once, Club Pairs, Mixed Pairs and Mixed Triples. He won the Minor Singles and has twice been runner-up in the Singles Championship. He is one of our regular Pennants skips.

Warwick was married in 1956 and has two daughters and two grandsons. His wife passed away in 1993.

Lloyd Sommerlad



Beryl Writes ...

The Mixed Triples Championship provided some of the most enjoyable and exciting matches seen in recent years. The final was a “cliff-hanger” through to the last end. Congratulations to the winners:- **Pat Hamilton, Lea McNeill, John Orton** (23), defeating **Joan Hodgson, Margaret Williams, Warwick Druce**, (18).

The Melbourne Cup Day was a great fun day at Bowls, with lots of prizes awarded for different achievements, organized by **Neil Falconer**.

Twilight Bowls commenced on 4th November, when 30 people attended. **Sue Cleary** cooks our most enjoyable meal every Friday night. Excellent bowling conditions, good food and good fellowship!

St Andrew’s Evening Bowls was followed by a gourmet dinner, again cooked by our Sue. It was a great night, and the 60 people who attended all had a good time.

It is a beautiful time of the year to be playing Bowls with dinner on Friday nights. We would love you to come next year to ‘Twilight’.

We hope to see you at the KBC Ltd. Christmas Party on Friday, 9th December at 5.30 pm.

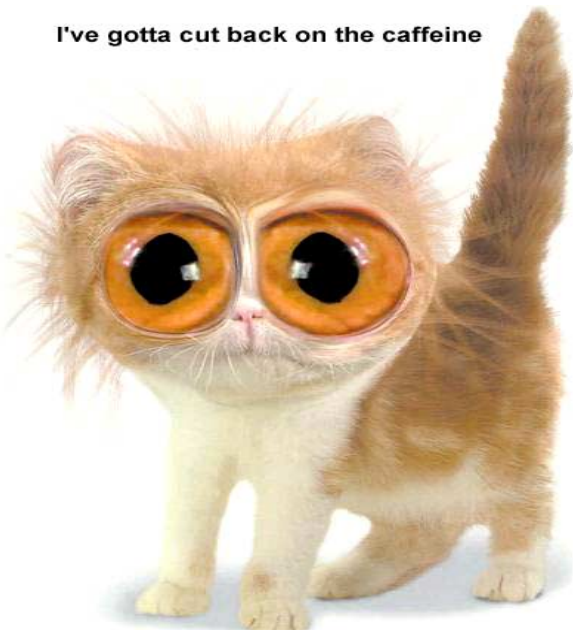
Beryl Stephens

KWBC COMPETITION RESULTS - 2005.

<u>COMPETITION</u>	<u>WINNERS</u>	<u>RUNNERS-UP</u>
Major singles	Maria Header.	Meg Falconer
Minor Singles	Maria Header	Shizuko Hashimoto
Pairs Championship	Livia Geniale Lea McNeill	Robin Hey Alice Burton
Triples Championship	Edith Cowlshaw Patricia Hamilton Maria Header	Mickie Johnston Barbara Cotton Meg Falconer
Fours Championship	Pamela Ramsay Robin Hey Joan Young Alice Burton	Judith Wall Livia Geniale Ray O’Donnell Lea McNeill
Consistency Singles	Maria Header	Shizuko Hashimoto
Consistency Pairs	Ray O’Donnell	Jeanette McInerney
Round Robin	Maureen Morris Barbara Cotton Maria Header	Shizuko Hashimoto Joan Hodgson Alice Burton



I've gotta cut back on the caffeine



Christmas is just plain weird. What other time of year do you sit in front of a dead tree in the living room and eat candy out of your socks.





**Bowling
Tips!**

Ed O'Donnell On . . . **RULES FOR THE MEASURER !**

From time to time the coaches notice some of the incorrect procedures that come into your social games, that detract from the performance of our competition teams. Here I would like to put forward some of the **DO s and DON'TS** for the benefit of the **MEASURER** in a fours team.

The third replaces the Skip as director in the head when the Skip goes to the mat. His/her hearing should be good and he/she should be able to **remain silent**.

When it is his mat he may stand anywhere in the head to direct his player, but when the bowl is delivered, move two metres behind the jack or onto the bank. The director must take care not to stand in front of the rink marker or so that the side pegs are obscured from the player on the mat. When the jack is on the two metre mark, the T, stand on the bank.

Do not allow leads or seconds to loiter in the head as this distracts the player on the mat.

Do not give directions to your skip, who has just left the head, **unless you** are asked.

When there is any disturbance in the head indicate, by hand signal **immediately**, if it is your bowl or your opponent's bowl that has been displaced.

When your skip's bowl comes to rest **do not** move into the head, unless it is to mark a toucher. The mat has changed hands and you should not say anything until the mat returns to you.

When the head has changed significantly and you are down, let the Skip know.

Do not give information to your skip that could be of more benefit to your opponent. Lifters must not be grounded to indicate a position in the head.

As measurer, be aware of the rules determining the result of a head.

Know the procedure for displacement of the jack or bowl while measuring.

As each shot is decided on **by both measurers**, remove it from the head to a neutral position. Place it on a duster, is one suggestion. **Do not** kick the bowls out of the head.

Support or wedge leaning bowls.

Signal the result to the scorers (seconds) and the skips when **you declare** the end.

Be aware of techniques used in measuring and observe your opponents use of the measure. It is possible to have a tied end, when the score remains the same and the number of ends increases. If you cannot agree ask your skip to call the umpire.

When your skip notifies his opponent that he does not intend to play his last bowl, make sure it does not enter the head.

Good bowling in 2006 **Ed**

Edwin Burton on the Laws . . .

PLACING THE MAT THE EXTRA END



PLACING THE MAT

The **mat** should be placed by the player who is to play first. The centre line of the mat must be on the centre line of the rink with the front edge of the mat not less than 2 metres from the rear ditch or less than 23 metres from the front ditch. **Law 18A**

No one is permitted to challenge the position of the mat after the first bowl in any end has been delivered **Law 18B**

If a valid challenge is made because the mat is not on the centre line, it is moved across to the correct position at the same distance from the rear ditch.

Law 18B(i)(a)

If the jack has previously been rolled it is then correctly centred.

If the mat has been placed too close to either the rear or front ditch, and the jack rolled, the jack shall be returned to be re-rolled by the opposing lead and the mat placed legally at that player's option.

During the playing of an end, should the mat be disturbed, it shall be re-aligned. **Law 18B(i)(c)**

After the completion of each end the mat shall be placed wholly beyond the face of the bank. **Law 18B(ii)**

THE EXTRA END

When a match ends with the score tied and a winner is required the decision is made by playing an extra end or ends, each of which is played as though it was a new game. **Law 49**

The skips, or side captains in a side match, toss with the winner to decide who shall play first.

Play commences from the position at which the previous end was completed. When a side is involved and both teams did not finish at the same end the extra end commences from the end at which the match should have ended, or, where more than two teams comprise a side, from where the majority of teams ended the match.

The mat is placed in accordance with Law 18 and all the usual laws and conditions of play applicable to the particular competition apply. In the event that the extra end results in a tied score, the whole process is repeated.

Seasons Greeting to All **Edwin**



TAILENDERS

Ireland's worst air disaster occurred early this morning when a small two-seater Cessna plane crashed into a cemetery. Irish search and rescue workers have recovered 1826 bodies so far and expect that number to climb as digging continues into the night....

Advice for the day: If you have a lot of tension and you get a headache, do what it says on the aspirin bottle: "Take two aspirin" and "Keep away from children."

I planted some birdseed. A bird came up. Now I don't know what to feed it. *I had amnesia once -- or twice. Protons have mass? I didn't even know they were Catholic. They told me I was gullible...and I believed them. Is Marx's tomb a communist plot?*

Bravery is arriving home late after a boys night out, being confronted by your wife with a broom, and having the guts to ask: "Are you still cleaning, or are you flying somewhere?"

Police arrested two kids yesterday, one was drinking battery acid, and the other was eating fireworks. They charged one and let the other one off.

Why do full-length golf courses have 18 holes, and not 20 or 10 or an even dozen? During a discussion among the club's membership board at St. Andrews in 1858, one of the members pointed out that it takes exactly 18 shots to polish off a fifth of Scotch. By limiting himself to only one shot of Scotch per hole, the Scot figured a round of golf was finished when the Scotch ran out. **NOW YOU KNOW!**

ALLEN-FISHER ACOUSTICS

Hear Here - Hear Now

5 reasons to choose us

1. We are independent
2. We fit the best hearing aid for you
3. We care
4. We have experience
5. We are government accredited



Hornsby 43 Palmerston Rd Ph: 9476 0002
Lindfield 2/356 Pacific Hwy Ph: 9416 5694